



481 Spotswood Englishtown Road, Monroe Township, New Jersey 08831
Phone 732.605.9440 Fax 732.605.9444

Tuesday, July 16th, 2019

Alan Weinberg
Business Administrator
Township of Monroe
1 Municipal Plaza
Township of Monroe, NJ 08831

***RE: Preliminary Traffic Investigation – Cranbury Half Acre Road and Station Road (CR 615)
Township of Monroe, Middlesex County, New Jersey***

Dear Mr. Weinberg:

I have completed my preliminary traffic investigation of two of the connector roads between Cranbury and the Township of Monroe, Cranbury Half Acre Road, and Station Road (CR 615), to determine the quantity of Commercial Motor Vehicles (CMV's) entering and exiting Monroe and offer the following:

Center State Engineering deployed a Houston Radar Armadillo Tracker Bidirectional Radar traffic data collector on June 3rd through June 29th at two (2) locations. We collected traffic volume and vehicle size data for two days (weekdays only) at each location.

The first location, Station Road (CR 615), yielded the following:

Incoming:
CMV's: 625 (2 days)

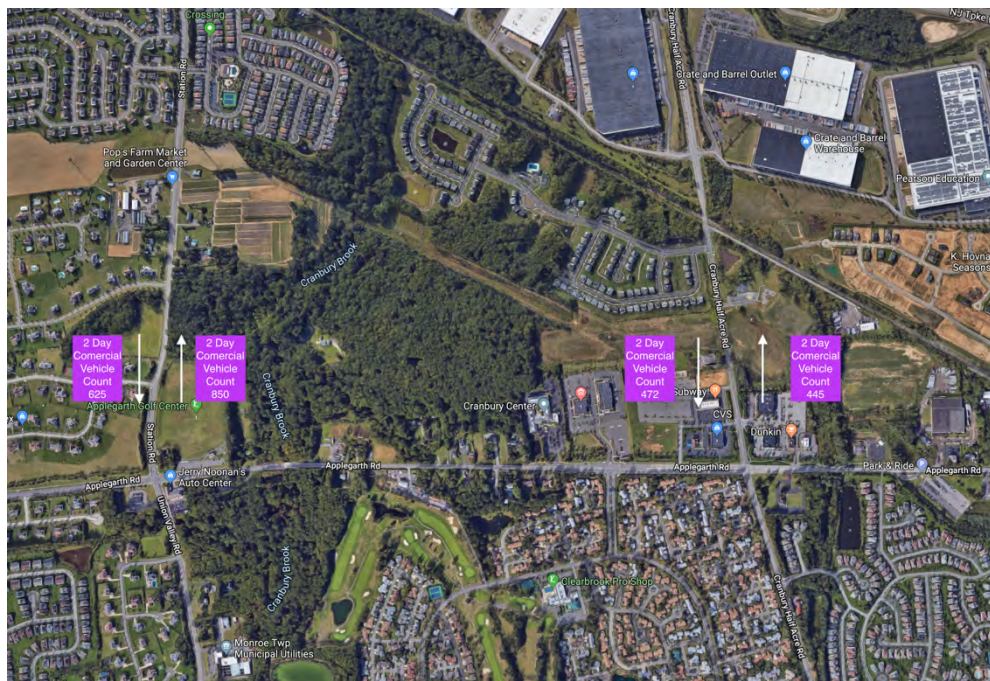
Outgoing:
CMV's: 850 (2 days)

The second location, Cranbury Half Acre Road, yielded the following:

Incoming:
CMV's: 472 (2 days)

Outgoing:
CMV's: 445 (2 days)

A reduced size map depicting this data is shown below (full size map attached):

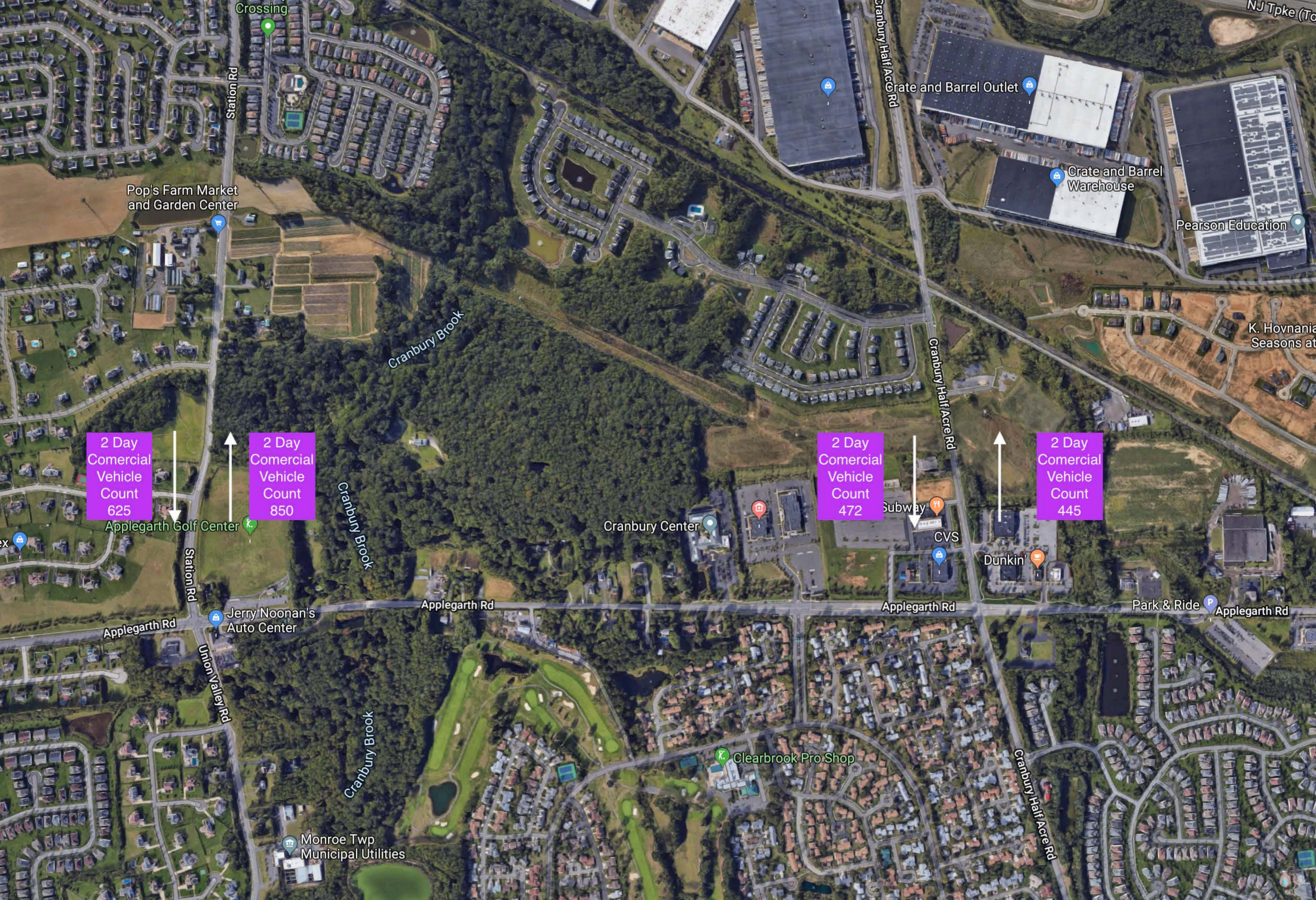


Commercial motor vehicles accounted for between 445 and 850 (2 day period) of the vehicles on the roads we investigated, with incoming and outgoing counts being similar. Please note that the traffic counting device cannot differentiate between various sizes of CMV's and we did not collect any data on the origin or destination of CMV's.

Please do not hesitate to contact the office, should you require anything further.

Sincerely

Ernest W. Feist, PE, PP, CME, CPWM
President



2 Day
Comercial
Vehicle
Count
625

2 Day
Comercial
Vehicle
Count
850

2 Day
Comercial
Vehicle
Count
472

2 Day
Comercial
Vehicle
Count
445